

SPE-5 電動油壓泵浦

- 多款油箱容量適用於各種油壓缸。
- 所有泵浦均配有堅固框架，適用於各種惡劣環境操作環境。
- 雙速設計減少循環次數：增加效能。
- 可外部調壓，出廠已預設壓力上限確保系統超荷使用。
- 附易讀值油位計。
- 全罩式散熱馬達，可適用於戶外操作環境。

Hydraulic Electric Pump

- ※Vary reservoirs for use with a wide range of cylinders and application.
- ※All pumps feature sturdy Roll Cages for use in tough environments.
- ※Two stage models for reduced cycle times and improved productivity.
- ※User adjustable external relief valve with a factory set upper limit prevents system overload.
- ※Easy to read integrated oil level sight glass.
- ※Totally enclosed fan-cooled motors are ideal for outdoor use in many environments.

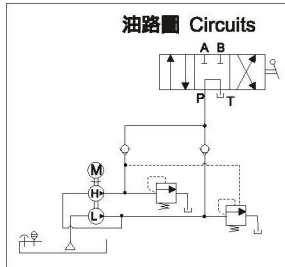
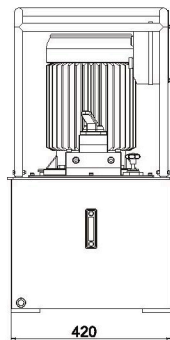
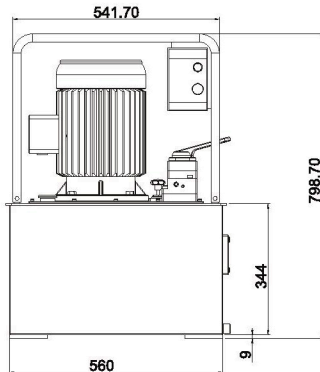
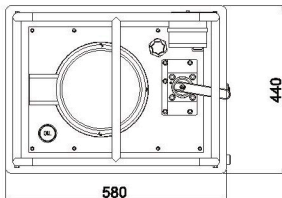
SPE-5 Series

Reservoir Capacity:
50-60 L

Flow at rated pressure:
2.6-18 L

Motor Size:
3.7 kW(5hp)

Maximum Operating Pressure:
700 bar



電泵型號選擇 : Custom build your Electric Pump:

SPE-5 2 6 3 50 4 CW
1 2 3 4 5 6 7

- | | |
|---|---|
| 1.馬達
5=5Hp(3.7kW) | 1.Motor
5=5Hp(3.7kW) |
| 2.電壓
2=230V
3=380V | 2.Voltage
2=230V
3=380V |
| 3.Hz
5=50Hz
6=60Hz | 3.Hz
5=50Hz
6=60Hz |
| 4.相數
3=3ph | 4.Phase
3=3ph |
| 5.油箱 (Lx0.26=gal)
50=50L(13.2gal)
60=60L(15.8gal)
★亦可依客戶訂製 | 5.Reservoir (Lx0.26=gal)
50=50L(13.2gal)
60=60L(15.8gal)
★User can order suitable reservoir. |
| 6.閥
3=手動三口方向閥
4=手動四口方向閥
5=三口電磁閥
6=四口電磁閥
7=三口逆止式電磁閥
8=四口逆止式電磁閥 | 6.Valve
3=Manual 3Way
4=Manual 4Way
5=Solenoid 3Way
6=Solenoid 4Way
7=Check Solenoid 3Way
8=Check Solenoid 4Way |
| 7.選配
C=線控裝置
W=輪子
G=壓力錶 | 7.Optional
C=Remote control
W=Wheel
G=Pressure gauge |

泵浦基本閥型 BASIC PUMP VALVE	適用油壓缸 Used with cylinder		閥作用 Valve Function		
手動三口方向閥 Manual 3 way Valve	●		●	●	●
手動四口方向閥 Manual 4 way Valve		●	●	●	●

型號 Model Number	馬達 Motor kW (hp)	操作 Operation 雙速操作 Two-stage	輸出壓力 Pressure Rating (bar)		輸出流量 Flow Rate (60Hz) (L/min)		轉速 Rpm	噪音值 dBA at Idle and 700bar	重量 Weight (50L no oil) (kg)
			1 st stage	2 nd stage	1 st stage	2 nd stage			
SPE-5	3.7 (5)	雙速操作 Two-stage	60	700	18	2.6	1740	70-79	190